

# Aleph Beis Go Fish

## Instructions



**Ages 4 and Up 2-6 Players**



**Object of the Game:** Collect the most matches

**Getting Ready to Play:** There are a total of 44 cards in the deck, 2 of each letter. Shuffle the cards and deal seven cards to each player. If there are more than four players, deal just 5 cards of each player. Put the remaining cards in the middle in a draw pile so that everyone can reach the draw pile. At any time that a player has two cards of the same letters in his/her hand, that is a match and he should put the cards down in front of him, face up.

**Playing the Game:** Youngest player starts and play continues clockwise. The first player can ask any other player for a card. For example, if he has the letter daled in his hand, he could ask player #2 if that player has the letter daled in his hand. If player #2 does have a daled in his hand, he must give it to player #1. Player #1 can then ask another player for another card. If player #2 does not have the card that player #1 asks for, player #1 must draw an extra card from the draw pile. If the drawn card matches one of his cards, he can place them down in front of him but his turn ends and the next player now gets a turn.

**Winning the Game:** When one player does not have any cards left in his hand, the game is now over. The player with the most matches wins the game!



**Other Fun Ways to Play:**

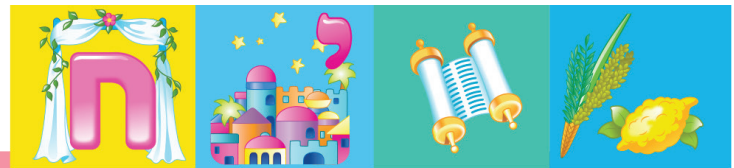
**Memory Match:** Shuffle the cards and place the cards face down on the table. Take turns turning over two cards at a time to see if the cards match. If the cards match, keep the cards, and take another turn. If the cards don't match, show the cards to the other players and then place them face down again in the same position. The player with the most matches wins.

**Flash Cards:** Show one of the cards to the other player and ask him to identify which letter that you are holding and what sound does it make.

**Aleph Bet Gimmel:** Ask the child to place all of the cards in order of the Aleph Beis.



Come visit our web page and see our other great games.  
[www.jewisheducationaltoys.com](http://www.jewisheducationaltoys.com)



# Aleph Beis Go Fish

## Instructions

Jewish Educational Toys creates games that foster positive Jewish education, identity and culture.



**MATCH AND WIN!**



©2019 Jewish Educational Toys  
 Illustrations By: Robbie Stillerman  
 Graphic Design: Yehudis Blumberger

